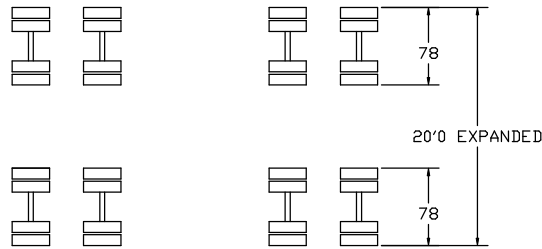
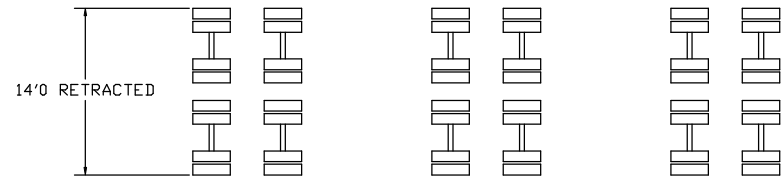


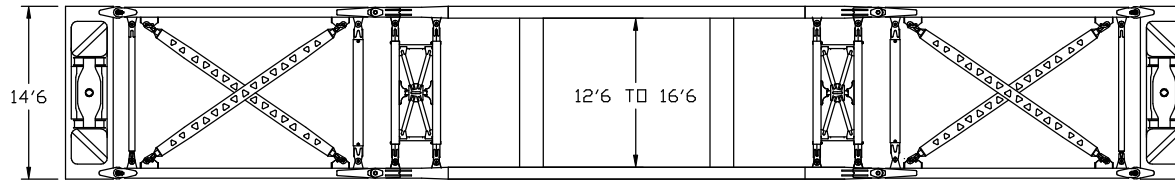
ITEM	PART NUMBER	REQ.	DESCRIPTION
------	-------------	------	-------------



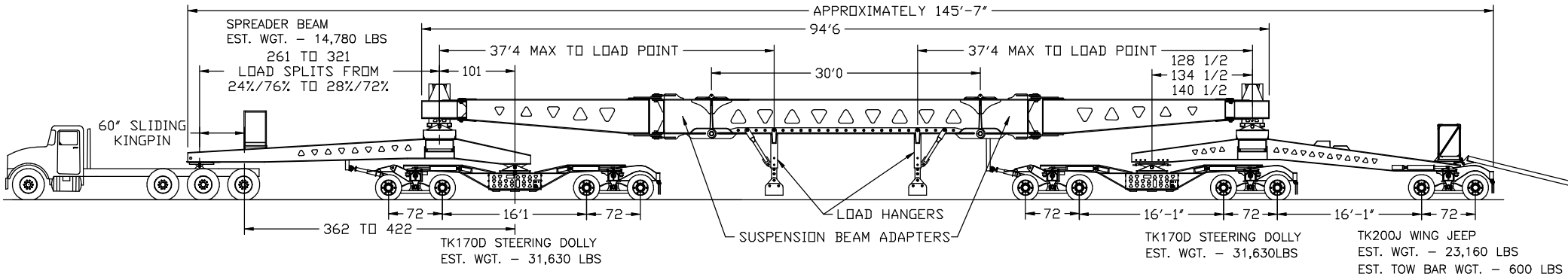
AXLE TOP VIEW (EXPANDED)



AXLE TOP VIEW (RETRACTED)



BEAM TOP VIEW



MODEL TK300 TRANSPORT SYSTEM
094150 SHOWN WITH ADAPTERS TO CONVERT GOOSENECKS TO SUSPENSION BEAMS
BEAM CAPACITY - 300,000 LB 2 POINT LOAD LOCATED 37'4" MAX FROM KING PINS
LOAD HANGERS DESIGNED TO USE CROSSMEMBERS FROM DECK AS LOAD BUNKS (2 SETS)
VARIABLE BEAM WIDTH (12'6" WIDE INSIDE TO 16'6" INSIDE)
REFERENCE 094150 FOR RUNNING GEAR SPECIFICATIONS

ESTIMATED TRAILER WEIGHT AS SHOWN - 186,680 LBS

DRAWING APPROVAL
This drawing is forwarded for your approval. Please check all dimensions before signing.

FIRM: _____
BY: _____
DATE: _____

This drawing represents a proprietary product of Trail King Industries, Inc., Mitchell, South Dakota, and shall not be released, disclosed, used, or duplicated, without the written permission of Trail King Industries.

MATERIAL:

EST WEIGHT =

SHEET OF
SCALE:

ECN	NO.	CHANGE	DATE	DESCRIPTION
				MODEL TK300 TRAILER SYSTEM
				SERIAL NO. AM119816 - 9818
				TRAIL KING Industries, Inc.
				P.O.BOX 1064 - MITCHELL, SD 57301
				DRAWN BY: DMR
				DATE: 08/17/2009
				PART NO. 094151

UNLESS OTHERWISE SPECIFIED
LOCATION TOLERANCES ARE ±.01
FRACTIONS DECIMALS ANGULAR
1/16 .001 30° = 30.0
XXX = .001
HOLE TOLERANCES ARE +.001 / -.0
FRACTION FRACTION
+1/32 .001
+.001 = .001