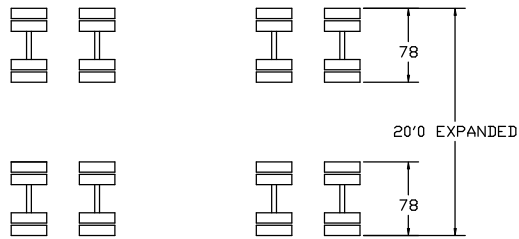
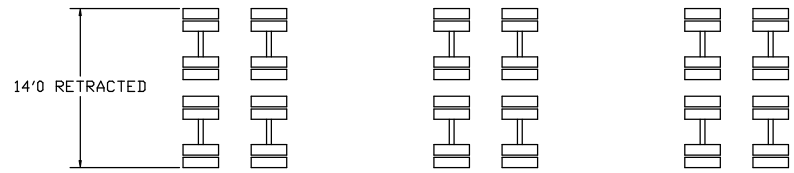


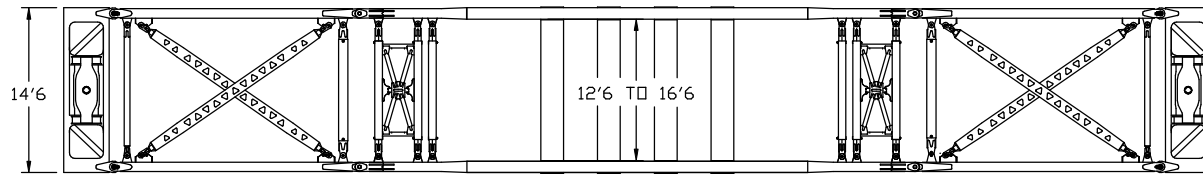
ITEM	PART NUMBER	REQ.	DESCRIPTION
------	-------------	------	-------------



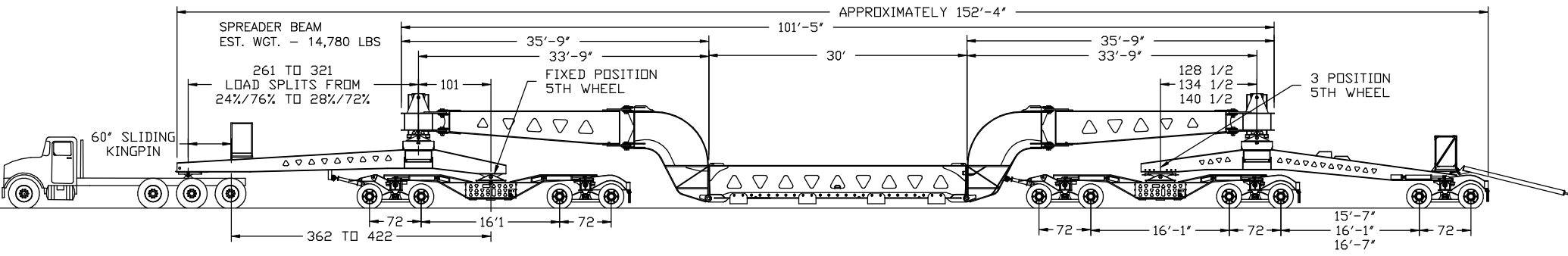
AXLE TOP VIEW (EXPANDED)



AXLE TOP VIEW (RETRACTED)



BEAM TOP VIEW

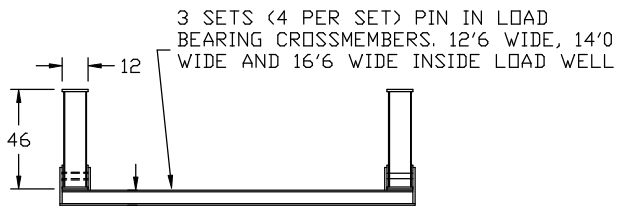


TK170D STEERING DOLLY
EST. WGT. - 31,630 LBS

MODEL TK300 TRANSPORT SYSTEM
 BEAM CAPACITY - 300,000 LBS IN CENTER 18' OF 30'0" DECK
 VARIABLE BEAM WIDTH (12'6" WIDE INSIDE TO 16'6" INSIDE)
 HYDRAULIC STEERING ON ALL AXLE GROUPS
 30" HYDRAULIC LIFT ON EACH END
 16 WHEEL TRUNNION AXLE WALKING BEAM SUSPENSION ON ALL GROUPS
 HYDRAULICLY EXPANDABLE SUSPENSION GROUPS FROM 14'0" TO 20'0" WIDE
 WIRELESS REMOTE ON ALL HYDRAULIC FUNCTIONS
 285/70R X 19.5 TIRES
 STEEL DISC WHEELS
 25,000 LB CAPACITY AXLES W/DRUM BRAKES
 (2) 20.3 HP KUBOTA DIESEL SELF-CONTAINED UNITS LOCATED IN STEERING DOLLIES
 OPERATOR'S PLATFORM FRONT AND REAR
 PUSH BAR ON REAR WING JEEP
 SPREADER BEAM @ FRONT BETWEEN TRUCK AND STEERING DOLLY
 60° SLIDING KING PIN ON FRONT SPREADER BEAM
 12" SLIDING COUPLER ON FRONT OF REAR WING JEEP
 20'0" & 40'0" BEAM EXTENSIONS (NOT SHOWN)
 (2) 4' X 10' LOAD BUNKS FOR USE WITH STEERING DOLLIES (NOT SHOWN)
 FRONT AND REAR SUSPENSION BEAM HEADERS DESIGNED TO CONNECT TO
 EXISTING WING JEEPS SERIAL NUMBERS 8-0882 AND 8-0884 RESPECTIVELY

TK170D STEERING DOLLY
EST. WGT. - 31,630LBS

TK200J WING JEEP
EST. WGT. - 23,160 LBS
EST. PUSH BAR WGT. - 600 LBS



NOTE: CROSS MEMBERS FOR 16'6" WIDE WILL BE 8" DEEP TO REDUCE DEFLECTION.

LOAD DECK SECTION VIEW
SHOWN @ 12'6" WIDE INSIDE

ESTIMATED TRAILER WEIGHT AS SHOWN - 204,700 LBS
 ESTIMATED WEIGHT 20' BEAM EXTENSION - 11,920 LBS
 ESTIMATED WEIGHT 40' BEAM EXTENSION - 22,020 LBS
 ESTIMATED CROSSMEMBER WEIGHT 12'6" INSIDE - 2,220 LBS EACH
 ESTIMATED CROSSMEMBER WEIGHT 14'0" INSIDE - 2,430 LBS EACH
 ESTIMATED CROSSMEMBER WEIGHT 16'6" INSIDE - 2,900 LBS EACH

MATERIAL:

EST WEIGHT =

SHEET OF
SCALE:

ECN	NO.	CHANGE	DATE

DRAWING APPROVAL
 This drawing is forwarded for your approval. Please check all dimensions before signing.

FIRM: _____

BY: _____

DATE: _____

This drawing represents a proprietary product of Trail King Industries, Inc., Mitchell, South Dakota, and shall not be released, disclosed, used, or duplicated, without the written permission of Trail King Industries.

DESCRIPTION
 MODEL TK300 TRAILER SYSTEM
 SERIAL NO. AM119816 - 9818

TRAIL KING Industries, Inc.
 P.O. BOX 1064 - MITCHELL, SD 57301

DRAWN BY: DMR DATE: 08/18/2009 PART NO.: 094150

UNLESS OTHERWISE SPECIFIED
 LOCATION TOLERANCES ARE:
 FRACTIONS DECIMALS ANGULAR
 1/16 .005 .005
 .XXX = .005
 HOLE TOLERANCES ARE: +.000 / -.0
 FRACTION FRACTION
 +1/32 .005
 .XXX = .001